

FIXTURE	MINIMUM PIPE SIZE (inch)
Bathtub ^a (60" x 32" and smaller)	1/2
Bathtub ^a (larger than 60"x32")	1/2
Bidet	3/8
Combination sink and tray	1/2
Dishwasher, domestic ^a	1/2
Drinking fountain	3/8
Hose bibbs	1/2
Kitchen sink ^a	1/2
Laundry, 1, 2 or 3 compartments ^a	1/2
Lavatory	3/8
Shower, single head ^a	1/2
Sinks, flushing rim	3/4
Sinks, service	1/2
Urinal, flush tank	1/2
Urinal, flushometer valve	3/4
Wall hydrant	1/2
Water closet, flush tank	3/8
Water closet, flushometer tank	3/8
Water closet, flushometer valve	1
Water closet, one piece ^a	1/2

HC-421
Growth compartments shall have a minimum of 300 square inches of clear cross-sectional area.

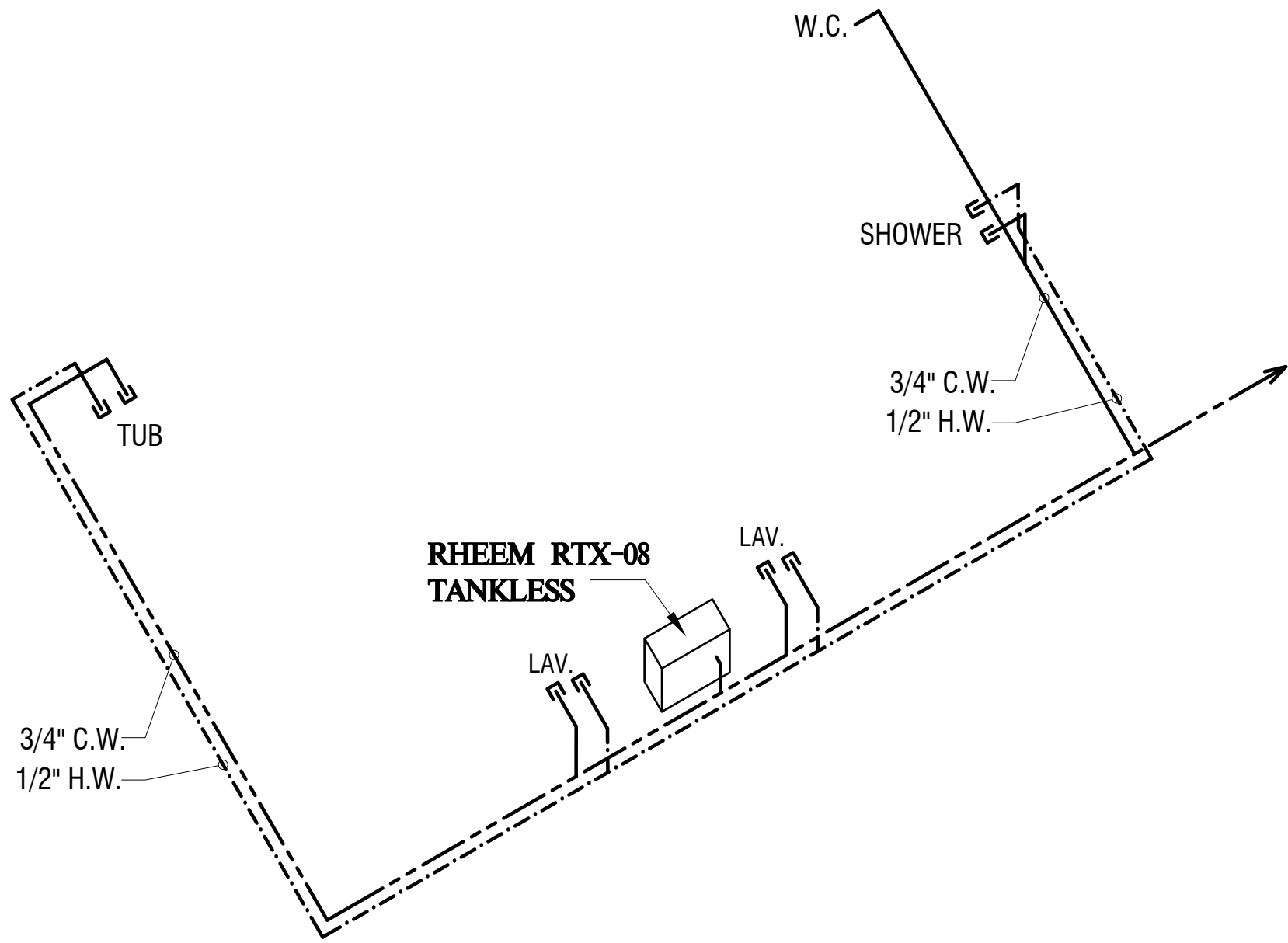
1. Growth compartments shall have a minimum of 30 inches in minimum dimension measured from the finished shower dimension at the widest point of the shower compartment of fabric clips, shower caps, and safety bars on any side. Except as required in Section 404, the minimum square area and dimension shall be measured from the finished shower dimension at the widest point of the finished wall of a compartment to its centerline and shall be continuous to a height of not less than 72 inches above the finished shower drain.

2. Shower walls shall have a minimum of 30 inches in minimum dimension at the widest point above head-holding shower heads and/or shower controls. Shower walls shall be finished with a minimum of 1/2 inch thick wall and turn a 90-degree joint with each other and with other wall, partition or shower floor.

HC-421.1

1. Solid doors shall be permitted if the shower, provided the required square-inch dimensions is maintained when the door is in the fully-locked position.

2. Shower compartments shall have a minimum of 25 inches in minimum dimension measured from the finished shower dimension at the widest point of the shower compartment has a clear cross-sectional area of not less than 1,300 square inches.



SCALE: N.T.S.

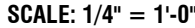
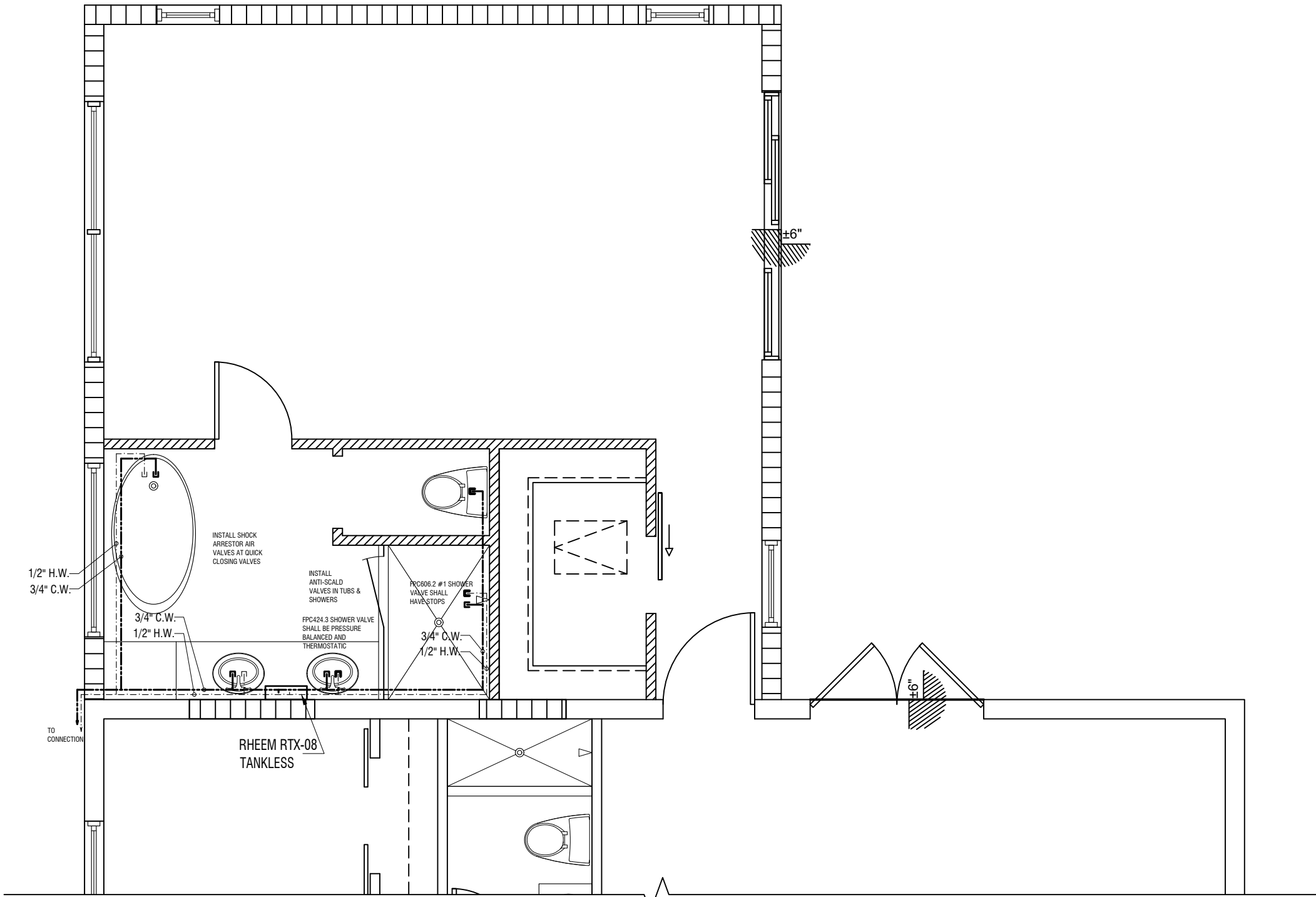
FBC PLUMBING 2023 TABLE 702.4
PIPING FITTINGS

BROWARD COUNTY AMENDED 2023 RULE 60-2		
MAXIMUM FLOW RATES AND CONSUMPTION FOR PLUMBING FIXTURES, FUTURE FITNESS AND APPLIANCES		
PLUMBING FIXTURES OR FUTURE FITTING	MAX FLOW RATE OR QUANTITY ALLOWED	
LAVATORY, PRIVATE	1.5 gpm at 60 psi	
LAVATORY, PUBLIC (WATERING)	25 gallons per metering cycle	
LAVATORY, PUBLIC (OTHER THAN WATERING)	0.5 gpm at 60 psi	
SHOWERS HEAD	2.5 gpm at 60 psi	
SINK, FOUNTAIN	2.2 gpm at 60 psi	
URINAL	5 gallons per flushing cycle	
WATER CLOSET	1.25 gallon per flushing cycle	
DISHWASHER (RESIDENTIAL)	1.5 gallons per cycle Energy Star/Label Series C or better	
DISHWASHER (COMMERCIAL)	12 gallons per rack at 90°F or lower machines and racks that do not drain at low temperature machines	
DISHWASHER (UNDER THE COUNTER - COMMERCIAL)	3 gallons per rack for high temperature machines and 1.7 gallons per rack for low temperature machines	
WASHING MACHINE	Water factor of 8 or lower ENERGY STAR/Label Series CERTIFIED	

NOTE:

- a) HAND-HELD SHOWER SPRAY IS A SHOWER HEAD - IF INSTALLED
- b) Consumption tolerance shall be determined from referenced standards.
- c) WATER FACTOR IN GALLONS PER CYCLE PER CUBIC FOOT

PEC 604.9 THE FLOW VELOCITY OF THE WATER DISTRIBUTION SYSTEM SHALL BE CONTROLLED TO REDUCE THE POSSIBILITY OF WATER HAMMER. A WATER-HAMMER ARRESTOR SHALL BE INSTALLED WHERE QUICK-CLOSING VALVES ARE UTILIZED. WATER-HAMMER ARRESTORS SHALL BE INSTALLED IN ACCORDANCE WITH THE MANUFACTURERS INSTRUCTIONS AND CONFORM TO ASSE 1010.



DEMETRIOS **CHRISTOPOULOS**
ARCHITECT
RICHARDS PROJECT MANAGER

KINO-PAUL RICHARDS
STATE LIC. AR07284
434 S.E. 13 COURT
DEERFIELD BEACH
FL 33441
954 821 6707
www.demetriosdesign.net

WRITTEN DIMENSIONS ON THESE DRAWINGS SHALL HAVE PRECEDENCE OVER SCALE DIMENSIONS.

6620 NW 29-TH STREET, SUNRISE FL 33313

ARCHITECT'S SEAS

SHEET NUMBER

P-2
OF 14